

Pump Accessories

Choose a fabric and state the name and model of your pump for custom fitted accessories.

Back Buddy *By Heartland Creative Designs*



Designed for toddlers and young children to wear on their back under or over their clothing so they cannot reach their pump. Made of fun, soft cotton fabrics. Adjustable shoulder & chest straps. Padded to protect the pump and settings.

Made for child sizes 1-4 (19-26 inches). Fabric choices below.

Just \$32.95

Tag-A-Long *By Heartland Creative Designs*



Designed specifically to provide a snug secure fit for each pump, this lightweight durable pump case goes everywhere you go. Just clip it to your belt or clothing with the sturdy plastic snaphook. Its snug fit and fun fashionable fabric designs make the Tag-A-Long a great choice for everyone.

Fabric choices available below.

Just \$18.95

Slider *By Heartland Creative Designs*



Designed specifically to provide a snug secure fit for each pump, this lightweight durable pump case goes everywhere you go. Just slide your belt through the loop. Its snug fit and fun fashionable fabric designs make the Slider a great choice for everyone. Fabric choices below.

Just \$18.95

Quick Detach Slider *By Heartland Creative Designs*



Custom designed to provide a snug, secure fit for each pump. Lightweight and durable, just wrap it around your belt horizontally and secure with velcro for a quick and easy way of attaching and detaching your case.

Fabric choices available below.

Just \$20.95

OmniPod Slider *By Heartland Creative Designs*



This light weight case was designed specifically for the OmniPod Personal Diabetes Manager (PDM). It provides a secure fit for your PDM alone or will accommodate your lancing device and a small vial of test strips.

This horizontal slider easily slides over your favorite belt and is available in many fabrics. (Fits belts up to 1 1/2")

Just \$22.95

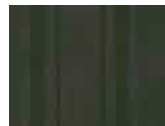
Fabrics available for the Tag-Along, Slider, Quick Detach Slider and Back Buddy:



Balls on Blue



BI Nylon Pack



Black Stripes



Blue Baseballs



Blue Camo



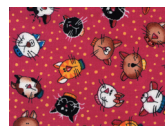
Bright Camo



Bright Stripes



Candy Squares



Comical Cats



Earthtone Cats



Fluorescent Frogs



Green Swirls



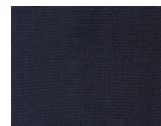
Khaki



Moss Green Camo



Natural Linen



Navy Nylon Pack



Pink Cloud



Purple Marble



Purple Stripes



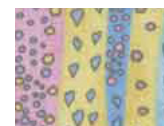
Rainbow Stars



Royal Blue Trigger



Tan Pseudo



Whimsical Str.

Shipping: These products are shipped from a separate location and may take up to 1 week for delivery. For faster shipping, please call our office to verify possible delivery times.

Call (800) 988-4772 or visit us online store at www.diabetesnet.com

Sports Bra *By Heartland Creative Designs*



Designed for a secure and carefree fit. The soft cotton pump case is available as detachable or sewn on for optimal comfort and fit. Available in S, M, L, and XL in white, navy or gray.

Sewn-on \$24.99 Detachable \$25.99

Bra Pocket *By Unique Accessories*



The most practical way for women to wear a pump! Made from soft velour fabric with a ribbon across the top. Velcros snugly to the inside of your bra strap, yet easy to get out for boluses.

Only \$15.25

Half-Slip *By Unique Accessories*



You'll love it! Wear with all your favorite work suits, skirts and dresses. Hide your pump underneath in a front compartment with no bulges. 25" length that you can resize to your length with no sewing involved. Rotate to any position that's comfortable.

Available in Black or White, in sizes Small 2-4, Medium 6-8, Large 10-12 or X-Large 14-16

Just \$29.95

Tamper Resistant Case *By Unique Accessories (For Sports)*



Made of soft neoprene and hard acrylic. For small children, the case can be worn around the waist and locked through the zipper ends using a small lock (not included). Hard acrylic piece (removable) prevents bolusing or tampering while locked. Perfect for rough sports. Adjustable elastic lets you get the perfect fit. Available in black, royal or purple.

Just \$29.95

Thigh Thing *By Unique Accessories*



Slip it on and use the detachable garter grip to secure to undies or nylons. Made from Lycra/Spandex and won't lose its shape. Works with all pumps and tubing lengths.

Available in black or white.

Just \$21.95

Leg Thing *By Unique Accessories*



The Leg-Thing is made from Lycra/Spandex and is worn on the calf. Great for long pants or dresses. Specially designed pocket holds your pump securely with a velcro closure. Works with all pumps.

Available in black or white.

Just \$19.95

Garter *By Heartland Creative Designs*



This lacy lightweight case is made of a soft satin to provide a snug fit for your pump. Clip the detachable garter strap to underwear to offer extra support and keep it in a secure position.

In white only. State your pump for custom fitting.

Just \$28.95

Hook and Hide *By Heartland Creative Designs*



Provides a safe place for your pump. This feminine pump case, made of soft satin, quickly attaches to your bra strap with a small clasp for great comfort and security. Available in white or black.

Just \$16.95

Hide Away *By Heartland Creative Designs*



This feminine pump case provides a snug, secure fit for your pump. Made of soft satin, it slips inside your bra under the arm for a secure placement.

Available in black or white.

Just \$14.95

Round About *By Heartland Creative Designs*



Soft case sized specifically for your pump with a belt made of soft elastic that fits smoothly under your clothing. Fits everyone - just snip the excess loop according to your waist size. The detachable case has a velcro

backing that allows you to place it anywhere on the belt for maximum comfort. Great for sports and sleeping.

Adult: 1-1/2" x 40" in black only.

Child: 1" x 32" in black or white.

Sewn-on \$18.95 Detachable \$19.95

Waist It *By Unique Accessories*



Soft velour on an elastic strap that velcros securely around the waist. Won't bounce, great under shirts and blouses. For kids and adults! Please state your pump when you place your order.

Available in Black or White, Kids: 1" wide straps (Length = 29" unstretched), Adults: 1 1/2" wide (Length = 39" unstretched) Black or White

Kids \$21.95, Adults \$22.95

Belter *By Unique Accessories*



Slips through your belt, fits belts up to 1.25" wide, horizontal and vertical positioning. Open and closes with velcro. Durable nylon in a variety of colors to match your favorite business or casual clothing.

Just \$19.35

Shipping: These products are shipped from a separate location and may take up to 1 week for delivery. For faster shipping, please call our office to verify possible delivery times.

Clip-N-Go *By Unique Accessories*

Securely clip to waistband or belt loop with interlocking clip. Made from a water resistant nylon. Cozmonitor and Spirit fit in the regular Clip-N-Go.

Regular: Black / White / Navy / Tan / Royal / Red / Grey / Dark Brown / Purple / Forest Green / Burgundy
For D-Tron: Black / White / Navy / Tan / Grey / Royal
For Paradigm: Black / Purple (will NOT fit 700 series)
For Cozmo: Black

Just \$19.95 (D-Tron Pump \$20.95)



T-Shirts *By Unique Accessories*



The great thing about our T-shirts is, the pump is inserted into the pocket from the inside of the shirt, with complete access from the outside for bolusing. All tubing stays underneath and out of your way. Uses pre-shrunk, Hanes Beefy-T's. Pocket stays shut with a Velcro closure.

Sizes: Small 34-36, Medium 38-40, Large 42-44, X-Large 46-48, XX-Large 50-52
Styles: PocketT has a Left side pocket, SleepT has a center pocket, and the Long Sleeve SleepT has a center pocket.

PocketT & SleepT \$21.95

PocketT 2XL, SleepT 2XL, LSleeve SleepT \$22.95
LSleeve SleepT 2XL \$24.95,

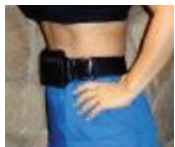
Cozmo System Products *By Unique Accessories*



Three new items for the Deltec-Cozmo Insulin Pump with the attached meter. These accessories hold everything you need, i.e., insulin pump, glucose meter, test strips, & lancet device. Visit our site for available colors.

Belter \$20.95, Clip N Go \$21.95, Waist It \$24.95

Sport Pak *By Unique Accessories*



For sports. Fits all sizes and activities. Neoprene pack has an inside compartment that holds your pump snugly against your body. Little or no tubing exposure. Front compartment holds meter, lancing device, strips and

glucose tabs. Small, compact, fits like a glove with no bounce as you walk and jog! 4" x 6", black only.

Just \$29.95

Pump Pak *By Unique Accessories*



Made of tough, black cordura nylon with a sturdy handle. It zips completely around, yet opens flat and is fully insulated. 8"x9"x2". The see-through pocket holds all your pump supplies in designated areas.

Available in Black, 8"x9"x2"

Only \$40.60

Carry-On Bag *By Unique Accessories*



Holds the Pump-Pak during travel. Keep your pump supplies safely beside you on the plane, ship, boat, etc. Black cordura nylon, 2" non-slip strap, top handle, deep front pocket for tickets.

Available in Black

Just \$31.55

Shipping: These products are shipped from a separate location and may take up to 1 week for delivery. For faster shipping, please call our office to verify possible delivery times.

Flannel PJ Bottoms *by Unique Accessories*



The perfect thing to put on after a long day. Pump stays secure and out of the way in a vertical front pocket sewn into the inside waistband. Drawstring waist allows the perfect fit. Made from the softest light weight flannel available. Great for keeping warm & cozy when you sleep. Available in Navy, please call for sizes.

Just \$26.96

Flannel Nite Shirt *By Unique Accessories*



Designed especially for women. Very soft and comfortable. Perfect for those cold winter nights. Pump pocket is sewn on center of the Nite-Shirt. Ankle length, with long sleeves and a pretty pink ribbon on the pocket. Very roomy too!

Just \$29.95

Snuggler *By Heartland Creative Designs*



Soft fabric, attaches via safety pin. Great way to pump at night. Fabrics: Airplanes, Bats & Balls, Blue Marble, Butterflies on Blue, Green Bugs, Navy Flannel, Pastel Stars, Purple Roses & White Flannel.

See website for swatches.

Just \$14.00

Sleep-Eze *By Unique Accessories*



Another sleeping alternative for pumpers, allows you to wear your favorite PJ's to bed. Just pin the soft velour to the inside or outside elastic of your favorite sleep ware.

Available in Black or White

Only \$14.00

DiabetesNet.com is your source for the latest in **diabetes information, technology, and resources**, plus diabetes books (**now at a 30% discount**), **test strips**, and products at discount. Visit our **store**, join our **forums**, & participate in our **monthly contest** for free products.

Visit our online store at www.diabetesnet.com

Order Form



Mail:
The Diabetes Mall
1030 W. Upas Street
San Diego, Ca. 92103



Call (800) 988-4772



Fax (619) 497-0900



Visit www.diabetesnet.com/ishop/

1. Information

Name _____

Street _____

Apt/Ste/Bldg _____

City _____

State _____ Zip _____

Phone () _____ Fax () _____

email _____

Ship To (Leave blank if same)

Name _____

Street _____

Apt/Ste/Bldg _____

City _____

State _____ Zip _____

Phone () _____ Fax () _____

2. Order

Book or Product	Qty	Price	Total
1		\$	\$
2		\$	\$
3		\$	\$
4		\$	\$
5		\$	\$
6 Plus a free Smart Chart record book	1	\$ Free	\$ Free

Shipping Cost must be included

Priority Mail, US, 2-3 Days: 1 book \$5.25 + \$1.25 per extra
 Media Mail, US, 10-14 Days: 1 book \$3.25 + \$.50 per extra
 Priority to Canada: 1 book \$9.50 + \$1.25 per extra (max 3)
 Above prices for books only. Call or check our website for shipping on test strips, scales, and software, or UPS delivery.

Subtotal \$ _____

CA residents, add 7.75% tax \$ _____

Add shipping \$ _____

Total \$ _____

3. Payment

Visa MC AE Disc. Check or money order to The Diabetes Mall

Card: # _____ Expires: _____ / _____

Signature: _____



Diabetes Mall 2009 Catalog

Include sales tax if you live in California. Prices are subject to change without notice.

Visit www.diabetesnet.com/ishop/ for current prices on test strips and new books.

Call (800) 988-4772 or visit us online store at www.diabetesnet.com